

49/57

57

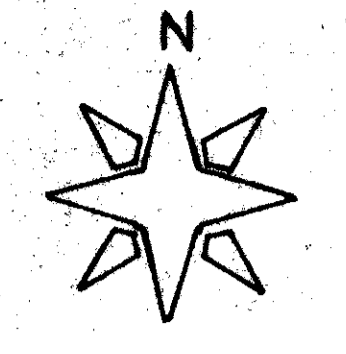
LOGGERS' RUN COMMERCIAL REPLAT

BEING A PORTION OF ORIOLE COUNTRY A P.U.D. (PB 32, P 175-180)

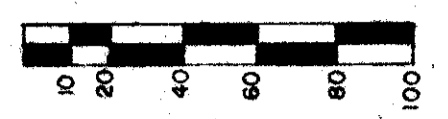
BEING A REPLAT OF A PORTION OF LOGGERS' RUN COMMERCIAL PLAT,
AS RECORDED IN P.B. 44, P. 32 & 33, PUBLIC RECORDS OF PALM BEACH COUNTY, FLORIDA
LYING IN SECTIONS 23 & 26, TOWNSHIP 47 SOUTH, RANGE 41 EAST.

APRIL 1984

SHEET 2 OF 2



SCALE 1" = 50'



STATE OF FLORIDA
COUNTY OF PALM BEACH

THIS PLAT WAS FILED FOR
RECORD AT _____
THIS _____ DAY OF _____
AD, 1984 AND DULY RECORDED
IN PLAT BOOK _____ ON PAGES
_____ AND _____

JOHN B. DUNKLE, CLERK
CIRCUIT COURT
BY: _____ DC.

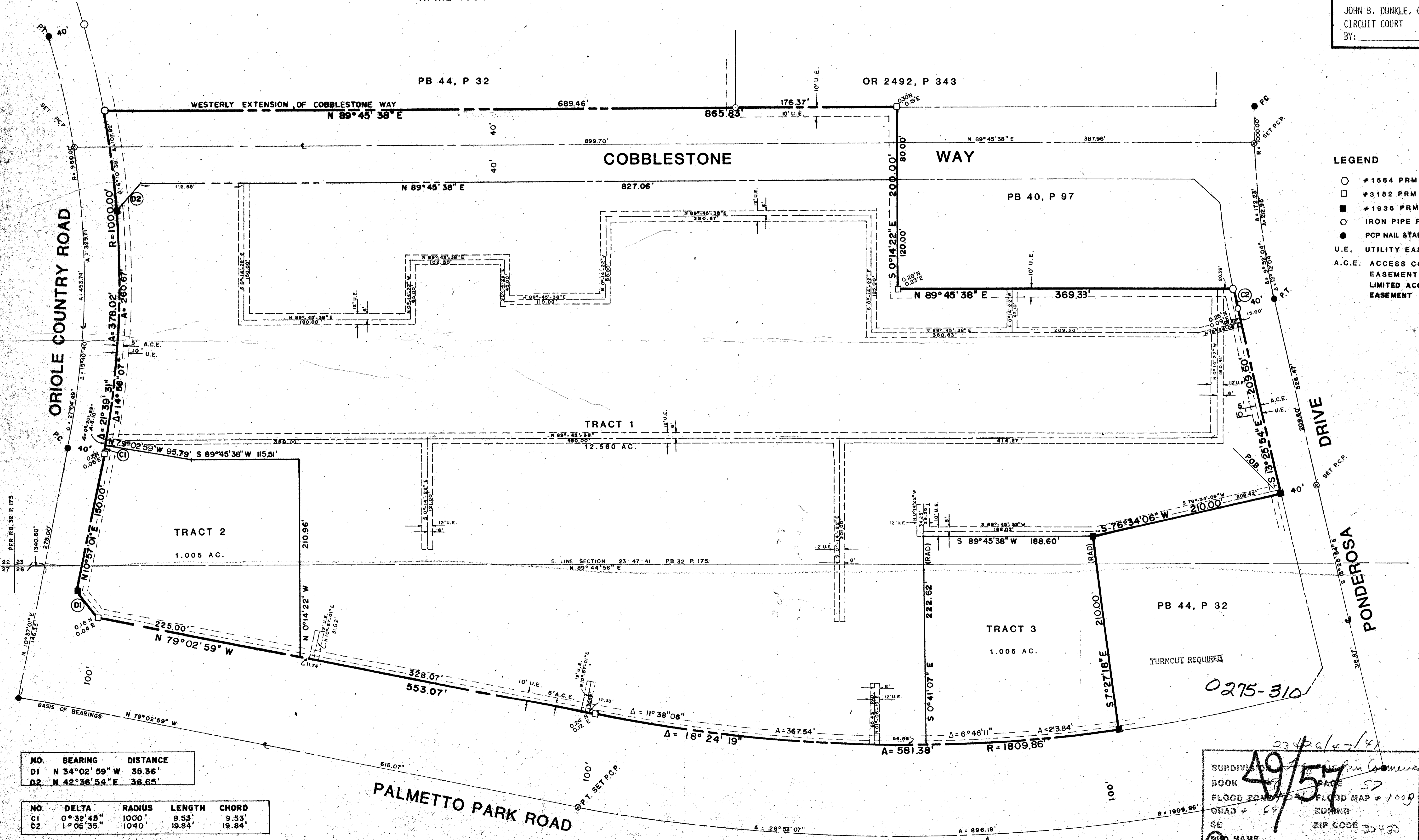
DRAWING NUMBER

DRAWING NUMBER

DRAWING NUMBER

LEGEND

- #1564 PRM FOUND
- #3182 PRM FOUND
- #1936 PRM SET
- IRON PIPE FOUND
- PCP NAIL & TAB FOUND
- U.E. UTILITY EASEMENT
- A.C.E. ACCESS CONTROL EASEMENT OR LIMITED ACCESS EASEMENT



NO.	BEARING	DISTANCE
D1	N 34°02' 59" W	35.36'
D2	N 42°36' 54" E	36.65'

NO.	DELTA	RADIUS	LENGTH	CHORD
C1	0° 32' 48"	1000'	9.53'	9.53'
C2	1° 05' 35"	1040'	19.84'	19.84'

PREPARED BY: THE O'HARGAN COMPANY
5588 NW 10th TER. FT. LAUDERDALE FL 33309 (771-7095)

23/26/47/41
 SUBDIVISION: *Loggers' Run Commercial*
 BOOK: *49/57* PAGE: *57*
 FLOOD ZONE: *1000*
 QUAD: *6F* ZONING: *32430*
 SE ZIP CODE: *32430*
 PUD NAME: _____

LOGGER'S RUN COMMERCIAL REPLAT